



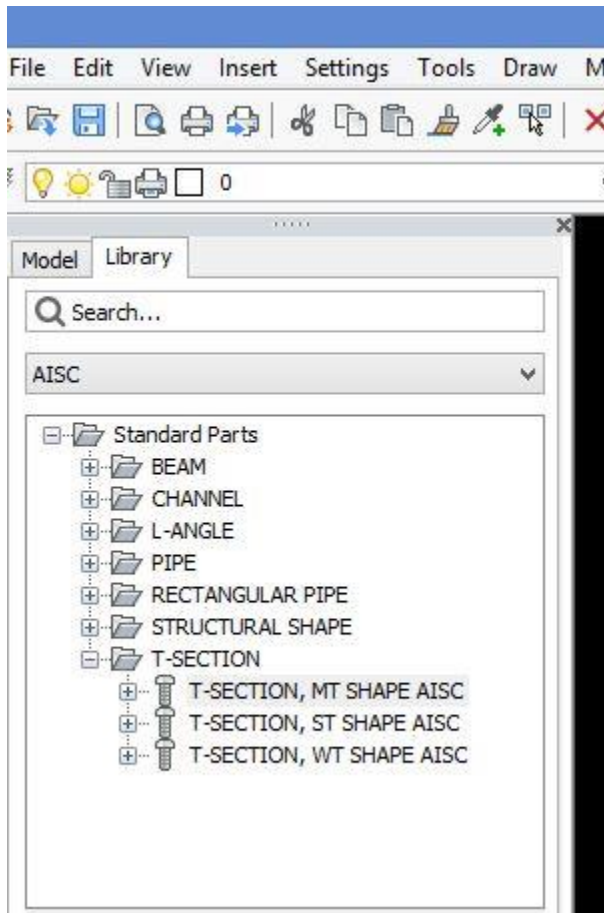
BricsCAD V14 was released in October 2013 during the Bricsys International Conference in Darmstadt, Germany. This is a revolutionary release that packs in extra power, promise, innovation and stability. With this release, Bricsys has delivered on its promise of bring to this planet BricsCAD, which is undoubtedly the # 1 alternative .dwg CAD platform, that unifies 2d and 3d CAD under one umbrella.

Here is a complete list of new features in BricsCAD V14:

- ANNOTATIVE STYLES and ENTITIES: This is now supported. Annotative entities can be displayed in different ways (scale, location, rotation) depending on the viewport. An annotative marker will be displayed while hovering over entities.

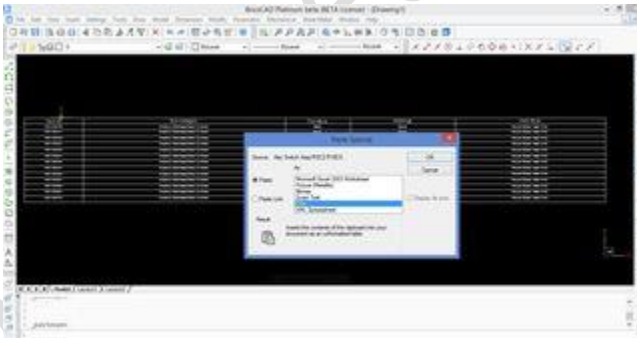
The following entities benefit from annotative scaling:

- single-line and multiline text
 - hatches
 - tables
 - dimensions
 - tolerances
 - leaders and multileaders
- HATCHEDIT command implemented.
 - ASSEMBLY DESIGN: New command BMGENDRAFT automatically generates 2d drawing views for a 3d mechanical component.
 - X-HARDWARE is retired. The Mechanical -> Mechanical Browser item (bmBrowser on the command line) offers a new Library tab that provides access to standard hardware part library.



- The CONVERTPOLY command (Modify -> Convert polyline) converts lightweight polylines to classic polylines and vice versa.
- GUI:
 - restyled user interface reducing unnecessary lines, boxes and other distractions
 - A completely new set of icons in toolbars and menus.
 - A larger (32 x 32 pixel) icon set is now available for toolbars and tool palettes.
- HELIX : native creation of helical curves represented by the using HELIX entity.
- Improved EXPORT options: additionally supported file formats
 - [STL: StereoLithography](#)
 - DAE: [Collada](#)
 - [STE, STP, STEP](#): Standard for Exchange of Product data
 - IGS, IGES: [Initial Graphics Exchange Specification](#)
 - [CATIA V4 and V5](#)
 - [VDA: VDA-FS](#)

- [XCGM](#)
- [3DXML](#)
- Improved IMPORT options
 - DAE: [Collada](#)
 - IGS, IGES: [Initial Graphics Exchange Specification](#)
 - [STE, STP, STEP](#): Standard for Exchange of Product data
 - IAM, IPT: Inventor
 - [CATIA](#): V4 and V5
 - PARASOLID:
 - PAR, PSM: Solid Edge
 - ASM (Creo Elements) , PRT (Pro Engineer)
 - [SLDASM](#) / [SLDPRT](#): (Solidworks)
 - [PRT: NX](#) (Unigraphics)
 - ASM, PRT: Creo Elements / Pro Engineer
 - VDA: VDA-FS
 - [XCGM](#)
 - [3DXML](#)
- PASTECLIP FROM EXCEL: an excel spreadsheet, or a range of rows and columns, can now be pasted as a dwg table entity, instead of as an OLE object. The TABLE command now also allows to create a table from XMLSS files. You must choose the option Edit -> Paste Special and choose CSV or XML Spreadsheet to get the copied Excel data as a TABLE entity.



- MLEADERSTYLE - now opens MULTILEADER STYLE EXPLORER for managing multileader styles.
- PROPERTIES BAR: when no entities are selected, the properties of the current view are displayed - this also allows to modify the view settings.
- QUAD cursor menu has been redesigned from scratch- more intuitive behaviour

- RASTER IMAGES- significant performance enhancements, support for GeoTIFF
- SHEET METAL DESIGN: Provides a set of dedicated tools for modeling Sheet Metal Design - FLANGE, BEND, BEND RELIEF and CORNER RELIEF features are supported. The unfolded representation is generated automatically and can be passed to CAM-systems as a DXF file.



- X-SOLIDS removed: new functionality has been added to replace functionality offered by X-solid, the history based X-solids modeling is retired - old content still available as a Direct modeling option.
- IME: implemented inline IME (Input Method Editor) editing for the MText editor.
- Support for [3D CONNEXION MOUSE](#): The 3D mouse is used for navigating the view while the regular mouse is used for controlling the pointer.
- LICENSING: BricsCAD V14's [new licensing system](#) requires you to activate licenses online. Allows upto 2 installs per license purchase.
- LICENSING: Both 'Free Trial' as well as paid licenses need to be activated online (once). Further use does not require you to be online.

Improvements

- DRAWING EXPLORER: LAYER EXPLORER and VIEW EXPLORER have additional control settings.
- DYNAMIC BLOCKS: improved grip edit.
- FIELDS: added additional format options like
 - conversion factor
 - prefix/suffix
 - decimal separator

- thousands separator
- zero suppression

Applications

- On the API level, there have been significant overhauls. The Lisp engine now has a FAST COM fully implemented.
- The VLE library from Torsten has been greatly improved and extended. Many new API functions added.
- Here is one thing I liked :*When executing long-running Lisp code (usually with high CPU load), the BricsCAD main window incorrectly appeared as "not responding" and seemed to hang, which often caused users to end BricsCAD by using the TaskManager.* We have been told this is fixed now.
- A huge number of boring but useful fixes to improve compatibility.